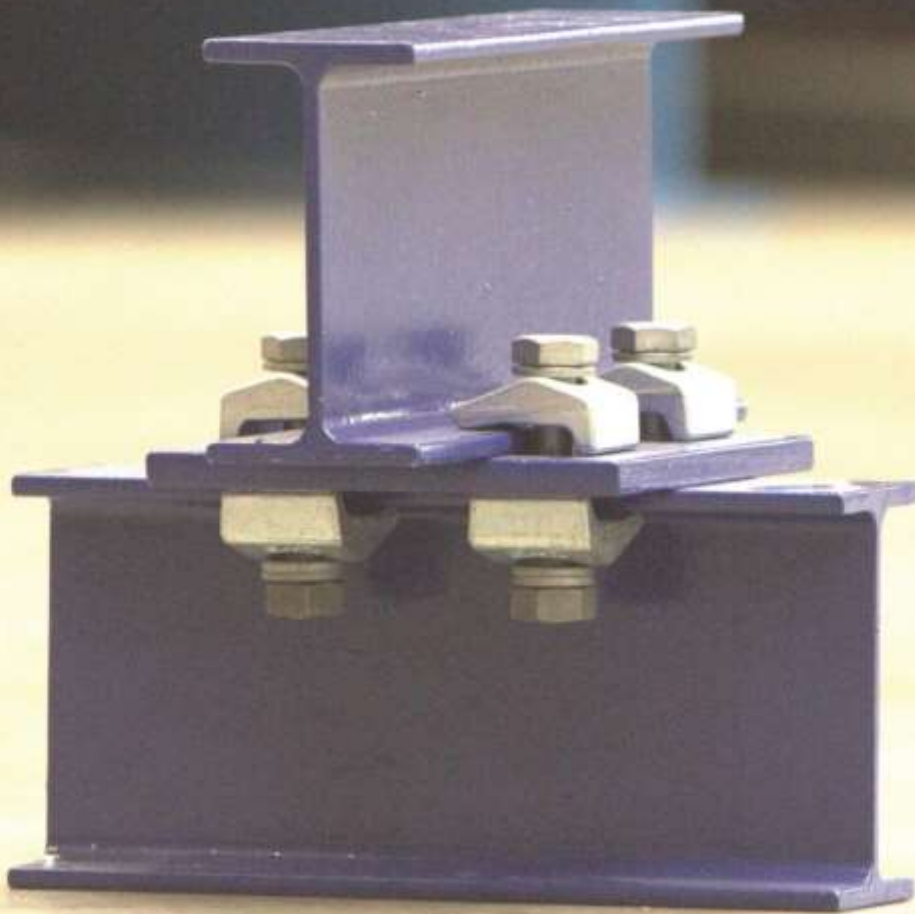


# Our range of products



# mtb

WE'VE BEEN HELPING TO CLAMP THINGS SINCE 1988

# Our Philosophy

We're a family run company based in Ansbach in Germany with a long history. In our core business of supplying and manufacturing fastening and connecting technical equipment in the form of forged clamping plates we've been a professional supplier for a quarter of a century.

High quality officially approved MTH products are in demand both at home and abroad. Our clients include well known companies in the automobile, steel and conveyor equipment industries.

Your satisfaction decides our company's success in the final analysis. It is hence much more important to us than any short-term business transaction.

A long and mutually beneficial relationship with you as a satisfied client is the basis of mutual financial success.

Holger Trost  
Managing partner

## Additionally

We offer free non-binding advice on your specific use.

- Which clamping plate is the right one?
- Does my project comply with the building inspectorate permit?
- Are the bolts and screws all of the right length?

My staff and I would be pleased to answer all your construction queries.

# Nova Grip

MTH clamping plates of the Nova Grip series are made of forged C45 N and installed using 10.9 HV or 8.8 quality screws. Installation must comply with building supervision authority permit/s.

The clamp connection can be undone at any time making MTH clamping plates very economical, not least because it needs no welding or drilling. The steel construction is thus unaltered.

The product design makes it unique.

The variable clamping area can connect steel sections without any further device being needed. Ease of installation and use is the main emphasis here.

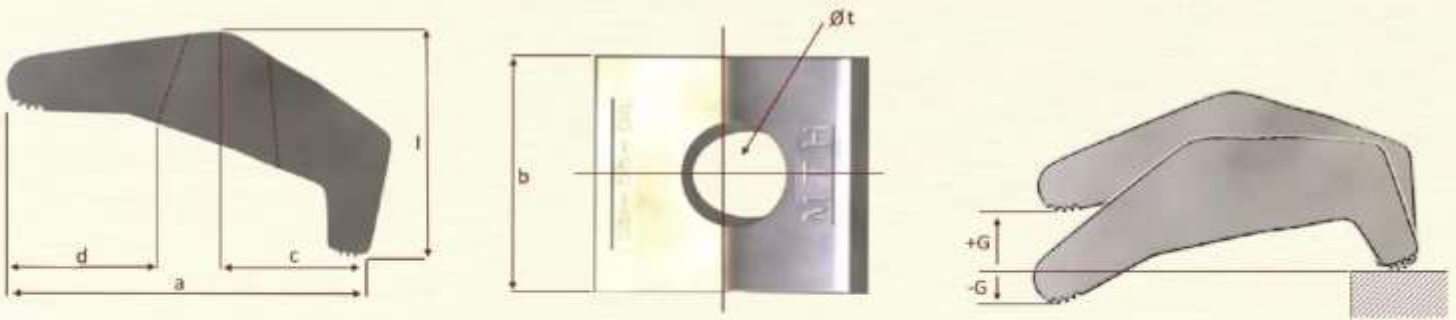
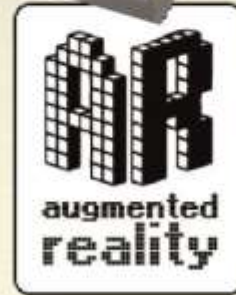
Should any section be thicker than the generously dimensioned clamping area distance then spacing discs can be used to compensate for same.

We can supply Nova Grip clamping devices in 10 variants. We thus have a solution for all normal needs.



See our products in 3D.

Just scan the QR codes and graphics with a smart phone.



Clamping plates with building inspectorate approval for dynamic loads.

Material: C45\*N zinc coated and galvanised with DiBt approval. M12 LA and Miss RF with lengthened press-on leg for clamping deeper in the flange. Inova M16ZW with concave additional disc and torsion prevention, Nova Grip M10/M12/M16 clamping plates also available in AA stainless steel but with other loading limits and without building supervision authority approval.

	Article Number	Tensile limit with 4 screws at 0 KN crosswise tensile		Crosswise tensile limit with 4 screws		Clamping range/area from/to in mm	Torque moment		
		galvanised	8.8 in kN	10.9 HV in kN	8.8 in kN		10.9 HV in kN	8.8. lightly oiled in Nm	10.9 in Nm
	Nova Grip M10	1000/1011	17.8	30.4	3.6	6.1	-6 to + 10	40	60
	Nova Grip M12	1001/1008	24.7	33.6	5	6.7	- 6 to + 14	75	85
	Nova Grip M12 LA	1002 /1027	14.8	.	3	.	-4 to + 13	65	.
	Nova Grip M16	1004/1009	42	75.2	8.2	15	-7 to +17	160	160
	Nova Grip M16 RF	1005/1029	33	.	6.6	.	-6 to +17	160	.
	Nova Grip M20	1006/1010	55.1	95.5	11	19.1	-11 to + 23	290	350
	Nova Grip M24	1007/1028	-	134.8	-	27	-10 to + 23	-	500
	Inova M16ZW	galvanically zinc coated 1039	44.6	.	9	.	+ 5 to +17	180	.

\* Tensile and shear resistance limits are dependent on one another. Intermediate values are given in our general building inspectorate permit in: [www.mth-ansbach.de/ABZ](http://www.mth-ansbach.de/ABZ)

Clamping plates without official approval

Material: CA5\*N zinc coated, values for static load

Nova Grip M12 LAS with lengthened press-on leg for clamping deeper in the flange and with higher supporting piece.

	Article Number	Tensile limit with 4 screws at 0KN crosswise tensile	Crosswise tensile limit with 4 screws at 0 KN tensile load *	Clamping range from/to in mm	Torque moment 8.8. lightly oiled in Nm	
		Zinc coated /galvanised	8.8 lightly oiled in kN			8.8 lightly oiled in kN
	Nova Grip M8	0999/1031	8	1.6	-6 to +10	25
	Nova Grip M12LAS	1003/1019	14.8	3	+18 to + 23	65

Permit number: Z 14.4 493

2.1.2 Materials

2.1.2.1 Clamp connection panels and spacing discs

Clamping plates and concave discs are made of C45 + N steel to DIN EN10083-2:2006-10 standard.

2.1.2.2 Screws, nuts and washers

Screws to DIN EN14399-1:2006-06 or DIN EN 15048-1:2007-07 standard are acceptable.

2.1.3 Corrosion protection

MTH clamping plates and spacer discs are zinc coated or galvanised.

3. General

The method of proof in DIN EN 1990:2010-12 in association with the national appendix applies.

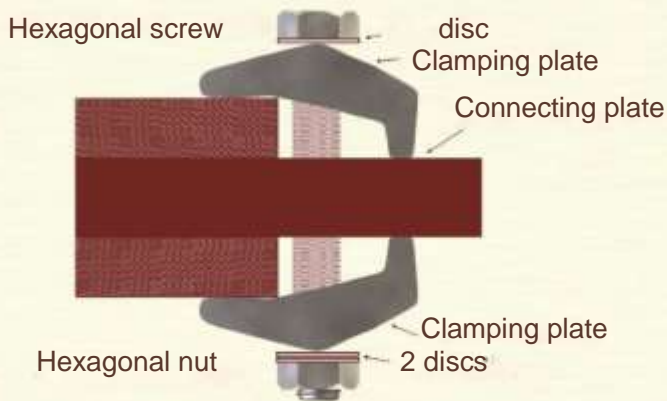
3.1.6 Additional rules for joints using beams running parallel above and below one another Joining such beams with two pairs of clamps (2 screws and 4 clamps) is permissible if the system has adequate rigidity (e.g. several clamp joints in sequence on one beam). 50% of the metrology values for joints using 4 screws apply.

The complete general building supervision authority permit (ABZ) is to be found on our Internet page at:

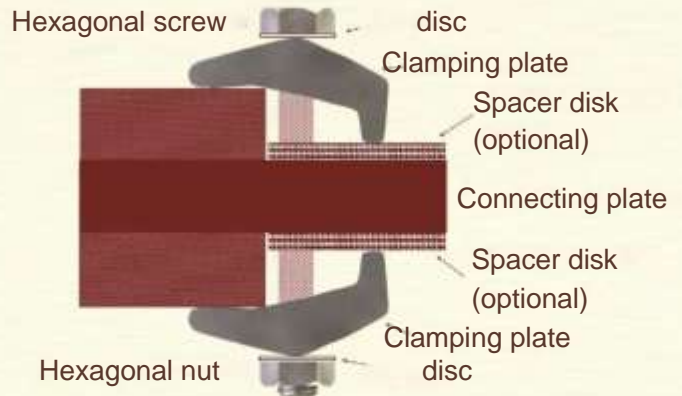
[www.mth-ansbach.de/ABZ](http://www.mth-ansbach.de/ABZ)



10.9.HV connection desian



8.8. Connection desian

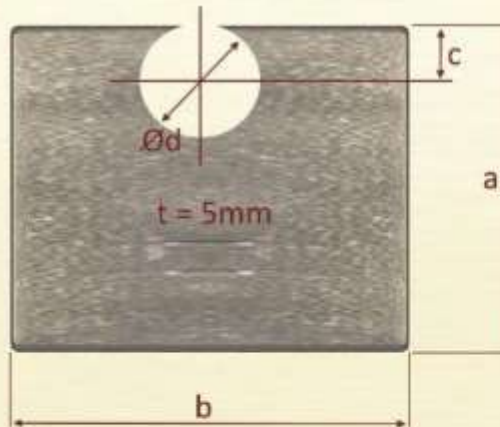


Dimensions in mm: Clamping				
a	b	c	d	1
36	32	16	13	20
43	38	19	17	23
53	38	19	25	23
57	SO	25	20	30
80	50	30	38	30
71	63	31	25	38
86	76	38	30	25
57	50	25	22	incl. disc 36

Clamping plate accessories:

Spacer disc

Material ST235, zinc galvanised, approved by DiBt for dynamic loads.



Drilling measurements are given on our Internet page at:



Dimensions in mm: Clamping				
a	b	c	d	1
36	32	16	15	21
55	38	20	28	38

	Article Number	Increase Clamping range/area	a	b	c	Ød
Spacer disc M10	1041	+ 5 mm	35	40	5	11
Spacer disc M12	1042	+ 5 mm	35	40	6	14
Spacer disc M16	1043	+ 5 mm	44	55	8	18
Spacer disc M20	1044	+ 5 mm	48	70	9	22

# Clamping claws

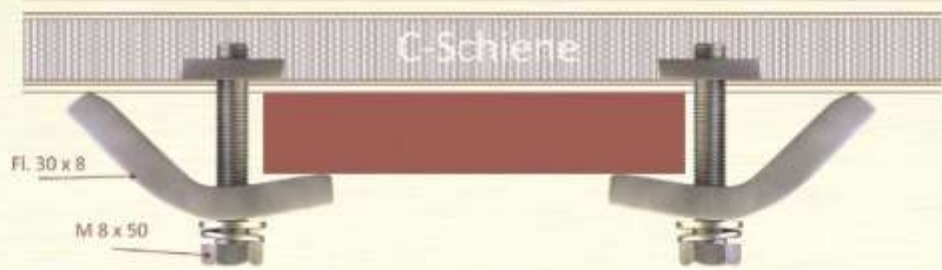
Our M8 clamping claws are galvanically zinc coated and made of steel.

They're available with screws but without C rails.

Clamping brackets and threaded plates can be ordered individually.



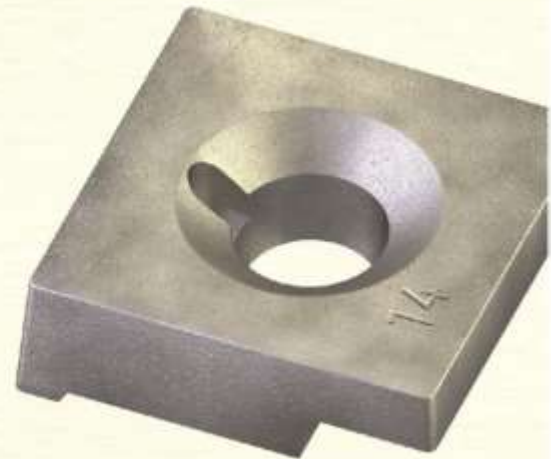
	Article Number
Clamping claw M8	1022



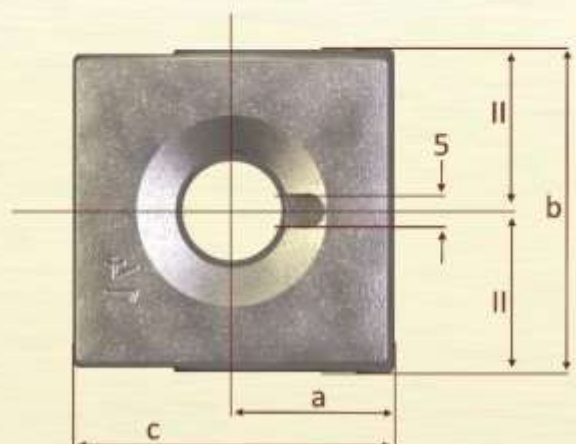
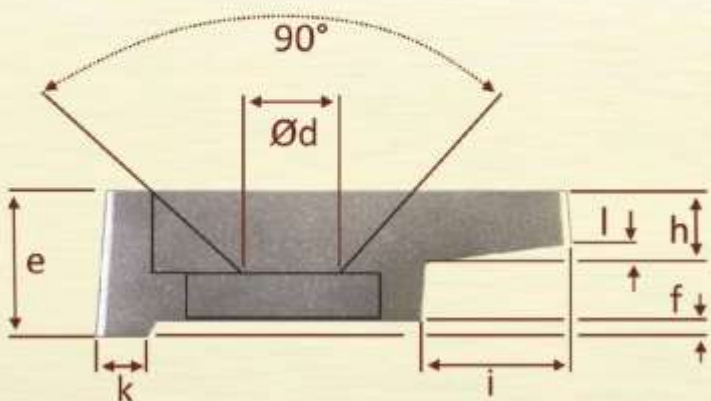
# Cast clamping plates

This clamping plate is specially designed to secure guide rails per DIN 15313 but can also be used for other steel sectioning. It's made of GJMW-400-5 (formerly GTW-40) malleable (cast) iron.

The very low profile and screws with recessed heads (DIN 604) mean this clamp can be used in places that are difficult to get at and/or only have space for very small clamping devices. The connection is tightened using the nut end.



Nominal size	DIN screw 604 (min. Length)	a	b	c	d	e	f	h	i	k	1
SG 11.5	M 10x 35	17	29	38.5	11.5	12	1.5	7.5*	14	5	1
SG 14	M 12 x 35	20	47*	45*	14	14	1.5	7.5*	14	5	2
SG 18	M 16 x 45	25	44	58	18	18	2	9	19	5	2



# mth

WE'VE BEEN HELPING TO CLAMP THINGS SINCE 1988

mth Befestigungstechnik GmbH  
Weinleite 1  
91522 Ansbach

Tel. +49 (0) 981 15566  
Fax: +49 (0) 981 17799

[info@mth-ansbach.de](mailto:info@mth-ansbach.de)  
[www.mth-ansbach.de](http://www.mth-ansbach.de)

